

BM28

USB Type-C CX

Battery BM25

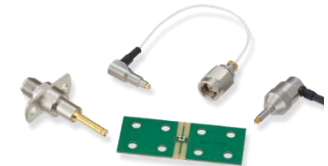
USB Type-C
6A Max.



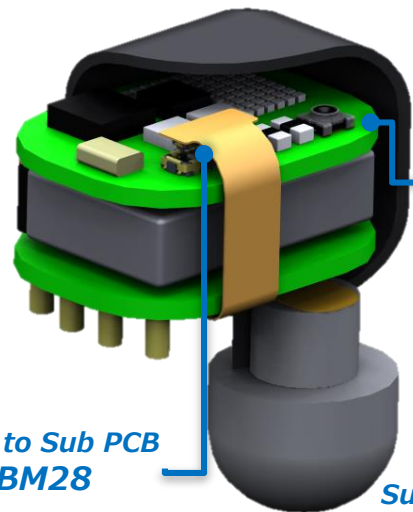
CX Series



Micro Coaxial Switch
Height: 0.85mm

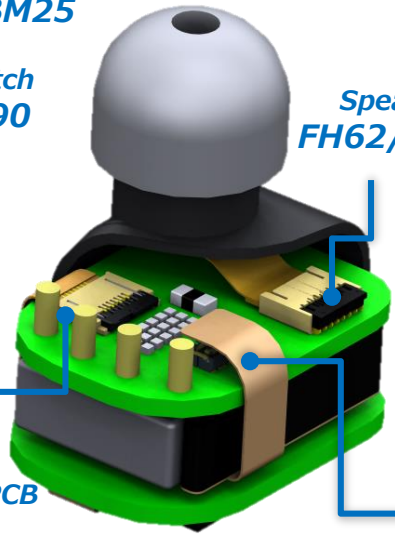


MS-180 Series



RF Switch MS-190

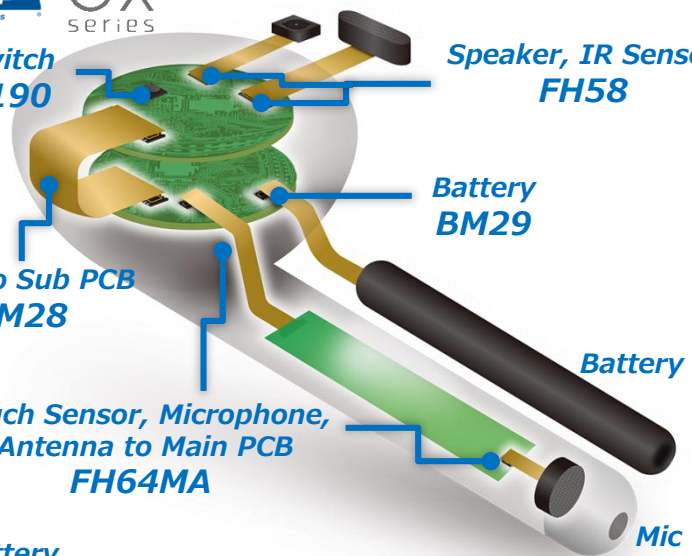
Main to Sub PCB BM28



Sub to Main PCB FH72

Speaker FH62/FH72

Battery BM29



RF Switch MS-190

Speaker, IR Sensor FH58

Main to Sub PCB BM28

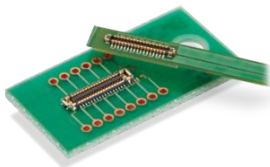
Battery BM29

Touch Sensor, Microphone, Antenna to Main PCB FH64MA

Battery

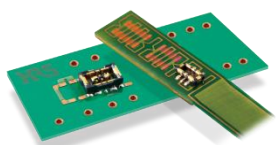
Mic

Narrow Hybrid
Depth: 1.7mm



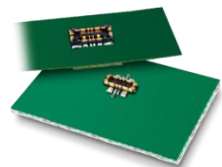
BM28 Series

Narrow Battery
Depth: 1.5mm



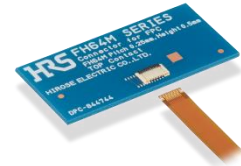
BM29 Series

High Current Battery
10A



BM25 Series

Low Profile ZIF
Height: 0.5mm



FH64MA Series

One Action, Simple and Easy
Pitch: 0.25/0.3mm



FH62/72 Series

FH

OneAction FH