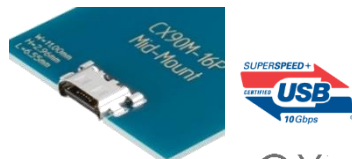


USB Type-C

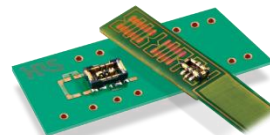
6A Max.



CX Series

Narrow Battery

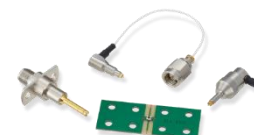
Depth=1.5mm



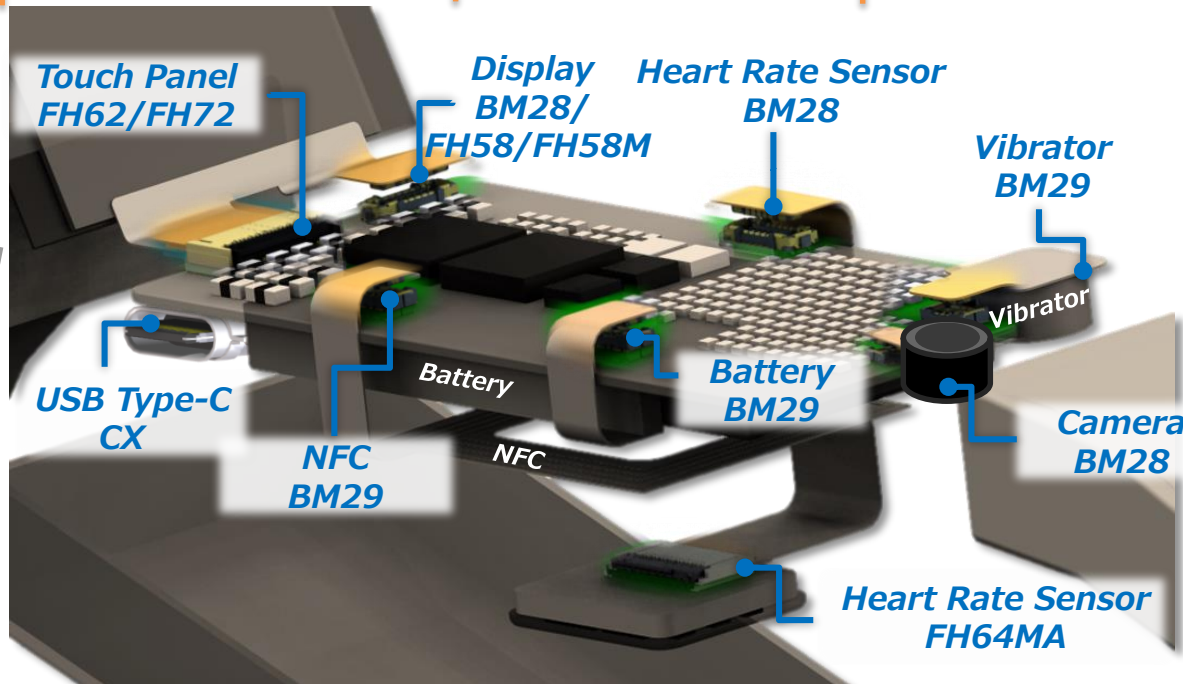
BM29 Series

Micro Coaxial Switch

Height=0.85mm



MS-180 Series



One Action, Simple and Easy

Pitch=0.25/0.3mm



FH62/72 Series

OneAction FH™

High Density ZIF

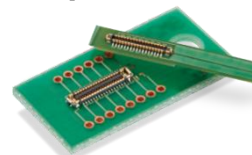
Pitch=0.2/0.25mm



FH58/FH58M Series

Narrow Hybrid

Depth=1.7mm



BM28 Series

Low Profile ZIF

Height=0.5mm



FH64MA Series