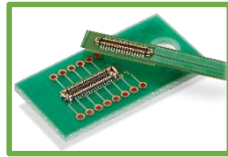


① LCD Connection

② Touch Panel Connection



FPC Connector
(1 Piece)

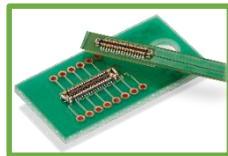


FPC-to-Board
(2 Piece)

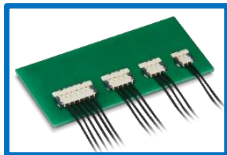
③ Speaker/ Microphone Connection



FPC Connector
(1 Piece)



FPC-to-Board
(2 Piece)



Wire-to-Board



④ Battery Connection

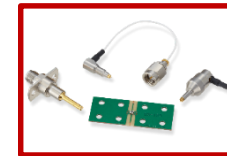


FPC-to-Board
(2 Piece)

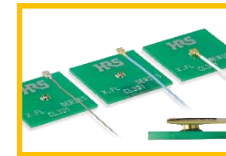


Wire-to-Board

⑤ Antenna Connection



RF Switch



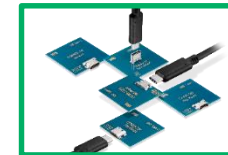
Miniature
RF Connector



FPC-to-Board
(2 Piece)



⑥ Interface Connection



I/O Connector

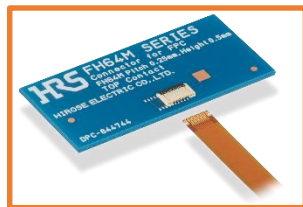
1. LCD/ 2. Touch Panel Connection (High Pin Count)

FPC Connectors



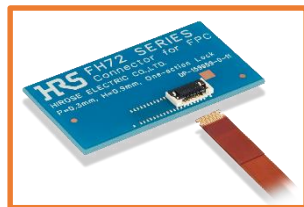
FH58/M
Space-Saving,
Top/Bottom Contact
Pitch: 0.2mm (FH58M: 0.25)
Height: 0.9mm
Depth: 3.1mm (FH58A: 3.4)
Pin Count: 7-71pos.
(Under Development: 81)
Rated Current: 0.2A

FH



FH64MA
World's Lowest Profile
Top Contact
Pitch: 0.25mm
Height: 0.5mm
Depth: 3.15mm
Pin Count: 5-25pos.
Rated Current: 0.2A

FH



FH72 OneAction
Superior Operability
(One Action)
Top Contact
Pitch: 0.3mm
Height: 0.9mm
Depth: 3.5mm
Pin Count: 11-31pos.
(Planned Development: 7-31)
Rated Current: 0.3A

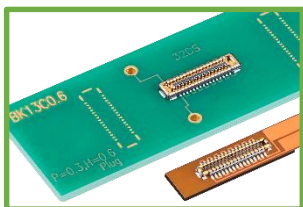
FH™



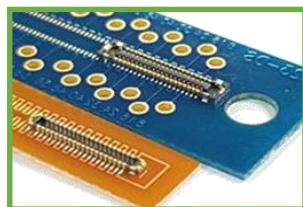
FH35C
0.3mm Pitch Standard Connector
Top/Bottom Contact
Pitch: 0.3mm
Height: 0.9mm
Depth: 4.2mm
Pin Count: 9-61pos.
Rated Current: 0.2A

FH

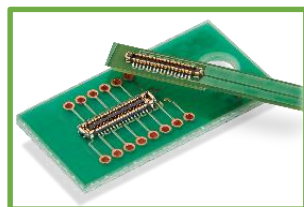
FPC-to-Board (2 Piece)



BK13C
Low Height,
Hybrid Connector up to 16A
Pitch: 0.35mm
Stacking Height: 0.6mm
Depth: Plug 1.8mm
Receptacle 1.9mm
Pin Count: 10-60pos.
Rated Current: 5A for power
0.3A for signal



BM23PF
Small, Hybrid Connector
Pitch: 0.35mm
Stacking Height: 0.8mm
Depth: 1.98mm
Pin Count: 10-64+2pos.
Rated Current: 5A for power
0.3A for signal



BM28
Low Profile, Space-Saving
Hybrid Connector up to 5A
Pitch: 0.35mm
Stacking Height: 0.6mm
Depth: 1.7mm
Pin Count: 6-60+2pos.
Rated Current: 5A for power
0.3A for signal

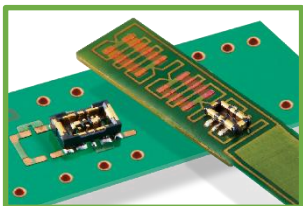


LCD

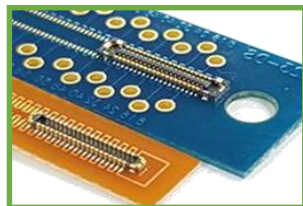
Touch Panel

3. Speaker/ Microphone Connection (Low Pin Count)

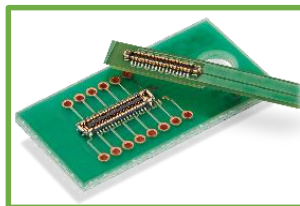
FPC-to-Board (2 Piece)



BM29
Ultra Small Hybrid Connector
Pitch: 0.35mm
Mated Height: 0.6mm
Depth: 1.5mm
Pin Count: 2-24+2pos.
Rated Current: 3A for power
0.3A for signal



BM23PF
Small, Hybrid Connector
Pitch: 0.35mm
Stacking Height: 0.8mm
Depth: 1.98mm
Pin Count: 10-64+2pos.
Rated Current: 5A for power
0.3A for signal



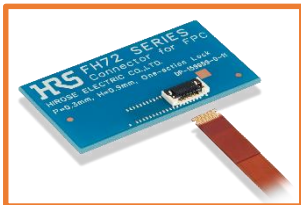
BM28
Low Profile, Space-Saving
Hybrid Connector up to 5A
Pitch: 0.35mm
Stacking Height: 0.6mm
Depth: 1.7mm
Pin Count: 6-60+2pos.
Rated Current: 5A for power
0.3A for signal

Microphone

Speaker



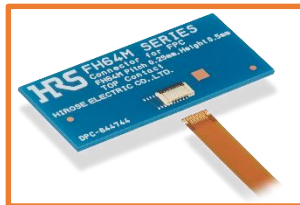
FPC Connectors (1 Piece)



FH72 *OneAction* **FH™**
Superior Operability
(One Action)
Top Contact
Pitch: 0.3mm
Height: 0.9mm
Pin Count: 11-31pos.
(Planned Development: 7-31)
Rated Current: 0.3A



FH34 **FH™**
High Retention Force,
Ideal Low Pin Count
Top/Bottom Contact
Pitch: 0.5mm
Height: 1.0mm
Depth: 3.8mm
Pin Count: 4-50pos.
Rated Current: 0.5A

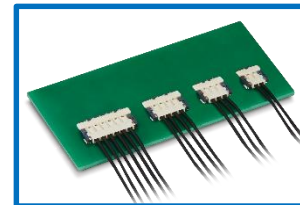


FH64MA **FH™**
World's Lowest Profile
Top Contact
Pitch: 0.25mm
Height: 0.5mm
Depth: 3.15mm
Pin Count: 5-25pos.
Rated Current: 0.2A

Wire-to-Board



DF53 *SignalBee*
Small, Low Profile
Pitch: 0.6mm
Mated Height: 1.45mm
Depth: 3.55mm
Pin Counts: 14pos.
AWG Wire: 32
Rated Current: 1.3A Max.



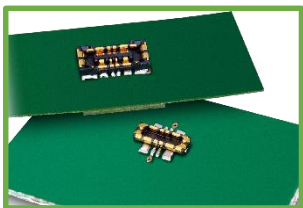
DF58 *SnapBee*
World's Lowest Profile
with 28 AWG
Pitch: 1.2mm
Mated Height: 1.0mm
Depth: 4.97mm
Pin Counts: 2-6pos.
AWG Wire: 28-30
Rated Current: 1.5-3A



DF57H *SnapBee*
Low Profile, Snap Lock Design
Pitch: 1.2mm
Mated Height: 1.4mm
Depth: 4.65mm
Pin Count: 2-6pos.
AWG Wire: 28-34
Rated Current: 0.5-3A

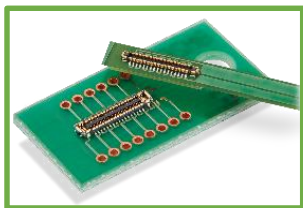
4. Battery Connection

Board-to-FPC (2 piece)



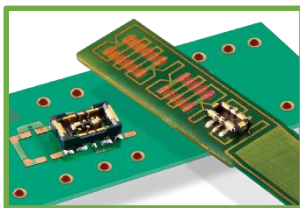
BM25

Ideal for Quick Charge
Power Connector
Pitch: 0.4mm
Mated Height: 0.7mm
Mated Depth: 2.6mm
Pin Count: 4+2pos.
Rated Current: 10A for power
0.3A for signal



BM28

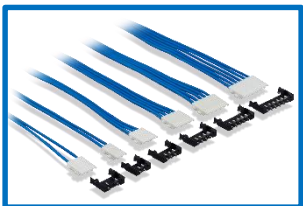
Low Profile, Space-Saving
Hybrid Connector up to 5A
Pitch: 0.35mm
Stacking Height: 0.6mm
Depth: 1.7mm
Pin Count: 6-60+2pos.
Rated Current: 5A for power
0.3A for signal



BM29

Ultra Small Hybrid Connector
Pitch: 0.35mm
Mated Height: 0.6mm
Depth: 1.5mm
Pin Count: 2-24+2pos.
Rated Current: 3A for power
0.3A for signal

Wire-to-Board



DF57H



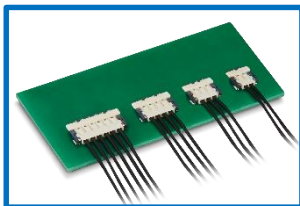
Low Profile, Snap Lock Design
Pitch: 1.2mm
Mated Height: 1.4mm
Depth: 4.65mm
Pin Count: 2-6pos.
AWG Wire: 28-34
Rated Current: 0.5-3A



DF53



Small, Low Profile
Pitch: 0.6mm
Mated Height: 1.45mm
Depth: 3.55mm
Pin Counts: 14pos.
AWG Wire: 32
Rated Current: 1.3A Max.



DF58

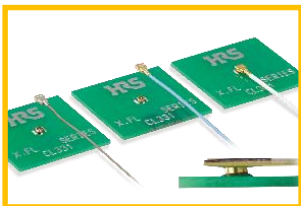


World's Lowest Profile
with 28 AWG
Pitch: 1.2mm
Mated Height: 1.0mm
Depth: 4.97mm
Pin Counts: 2-6pos.
AWG Wire: 28-30
Rated Current: 1.5-3A



5. Antenna Connection

Miniature RF Connectors



X.FL
Superior High Frequency
Mated Height: 1.0mm Max.
Frequency: DC-6GHz
V.S.W.R.: 1.4 Max.



X.FL (Low Loss Type)
WiGig Standard
Mated Height: 1.3mm Max.
Frequency: DC-12GHz
V.S.W.R.: 1.7 Max.
Intel WiGig recommended



X.FL (Board-to-FPC)
Ultra Low profile connector for FPC
Mated Height: 0.89mm Max.
Frequency: DC-6GHz
V.S.W.R.: 1.5 Max.



C.FL
Micro RF Connector
Mated Height: 0.92mm
Frequency: DC-30GHz
V.S.W.R.: 1.6 Max.



U.FL
Widely Used RF Connector
Mated Height: 2.0mm Max.
or 2.4-2.5 Max.
Frequency: DC-6GHz
V.S.W.R.: 1.5 Max.

FPC-to-Board (2 Piece)



BM46
Multi-RF Board-to-Board Connector
Pitch: 0.35mm
Stacking Height: 0.6mm
Frequency: DC-12GHz
V.S.W.R.: 1.6 Max.

RF Switch



MS-156C
Widely Used RF Switch
Height: 1.35mm
Frequency: DC-11GHz
V.S.W.R.: 1.8 Max.



MS-180
Small Switch for Checking Terminal
Height: 0.85mm
Frequency: DC-11GHz
V.S.W.R.: 1.4 Max.



6. Interface Connection

I/O



CX90M-16P

USB Type-C Connector
USB2.0, Supports 6A
Mid-Mount, 16pos.



CX90B-16P

USB Type-C Connector
USB2.0, 5A
On-board, 16pos.



CX90MWD2G-24P

Waterproof Type-C Connector
USB3.2 Gen1, 5A
IPX8, 24pos., Mid-Mount



CX90MWP1-24P

USB Type-C Connector
USB3.2 Gen1
Mid-Mount, 24pos.
Space-Saving



ZX

Micro-USB2.0 Connector
12, 16, 20pos.



ZX62W

Micro-USB2.0 Connector
Overmolded Type
Splash Resistant Receptacle



