



Handy Terminal▲



▲ Embedded Display Panels



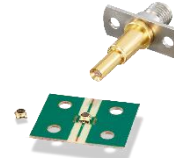
Industrial Panels▲

## Small and Low Profile RF Connectors



### U.FL

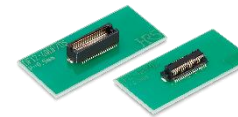
Mated Height:  
1.9/2.3-2.4mm  
(2.5mm Max.)  
Applicable Cable:  
ø0.81/0.95/1.13/  
1.32/1.37mm



### MS-156C

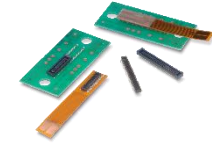
Switch for Module Functionality  
Inspection  
Height: 1.35mm  
Frequency: DC-11GHz  
V.S.W.R.: 1.5 Max.

## Low Profile Board-to-Board Connectors



### DF12N

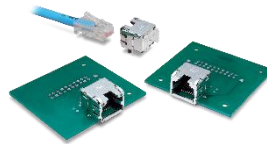
Pitch: 0.5mm  
Stacking Height: 3-5.0mm  
No. of Pos.: 10-80



### DF40

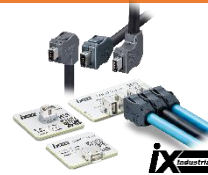
Pitch: 0.4mm  
Stacking Height: 1.5-4.0mm  
No. of Pos.: 10-120

## Small Interface Connector



### TM11R

RJ45  
EMI Modular Jack



### ix Industrial

Cat.6A Ethernet  
Small and Robust



### CX

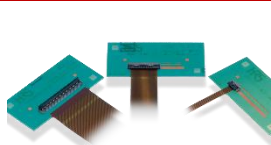
USB Type-C  
USB4 Gen.2



### DH

1mm Pitch  
High Speed, Small

## FPC/FFC Connector



### FH52K

Rugged  
Pitch: 0.5, 1.0mm  
Height: 2.0mm  
No. of Pos.: 6-80



### FH75

Two-point Contact  
Pitch: 0.5mm  
Height: 2.0mm  
No. of Pos.: 40



### FH28K

Rugged  
Pitch: 0.5mm  
Height: 2.55mm  
No. of Pos.: 10-80



### FH34

Compact  
Pitch: 0.5mm  
Height: 1.0mm  
No. of Pos.: 4-50



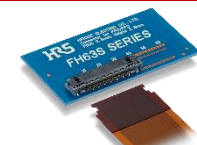
### FH55

High Speed  
Transmission  
Pitch: 0.5mm  
Height: 1.5mm  
No. of Pos.: 22-40



### FH41

Supported Shielded  
FPC  
Pitch: 0.5mm  
Height: 2.5mm  
No. of Pos.: 15~68

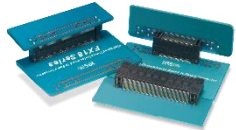


### FH63S

One Action  
Pitch: 0.5mm  
Height: 2.8mm  
No. of Pos.: 10-40



## Floating Connectors

**FunctionMAX™****FX18**

10+Gbps High Speed Transmission  
Pitch: 0.8mm  
Stacking Height: 10-45mm  
No. of Pos.: 40-180\*  
(\*160, 180pos.: Coplanar Connection)

**FunctionMAX™****FX8/FX8C**

3.125Gbps High Speed Transmission  
Pitch:0.6mm  
Stacking Height: 3-16mm  
No. of Pos.: 40-140

**FunctionMAX™****FX27**

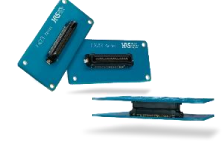
Card Edge Connector  
Pitch: 0.8mm  
Stacking Height: 22mm Min.  
No. of Pos.: 40-120

**FunctionMAX™****FX20**

Pitch:0.5mm  
Stacking Height: 15-30mm  
No. of Pos.: 20-140

**FunctionMAX™****FX22**

Coplanar  
Pitch:0.5mm  
No. of Pos.: 40-80

**FunctionMAX™****FX23/FX23L**

8+Gbps High Speed Transmission  
Pitch:0.5mm  
Stacking Height: 8-30mm  
No. of Pos.: 20-120  
(Power: 4pos.)

## Wire-to-Board Connectors

**DF57H SnapBee™**

Low Profile  
Pitch: 1.2mm  
No. of Pos.: 2-6

**DF50A SignalBee™**

Positive Lock, 1 Row  
Pitch: 1.0mm  
No. of Pos.: 2-16

**DF50 SignalBee™**

Positive Lock, 2 Rows  
Pitch: 1.0mm  
No. of Pos.: 20-50

**DF61Y SnapBee™**

High Current  
Pitch: 2.0mm

**DF62 SignalBee™**

Slim In-line  
No. of Pos.: 2-24